

Bright. Clear. True.



**PANOVIEW**  
ULTRA

The new high-resolution telescope generation



Bright. Clear. True.

The latest generation of high definition optics housed in the **PANOVIEW ULTRA** is optimized for an ultra high definition (4K) image through the enhanced delivery of light to the surgical field. The development of innovative materials delivers brightness and clarity beyond expectations.

### Clearly Brilliant

The **PANOVIEW ULTRA** telescopes are built with extra low dispersion glass rod lenses which control chromatic aberrations and enhance image quality.

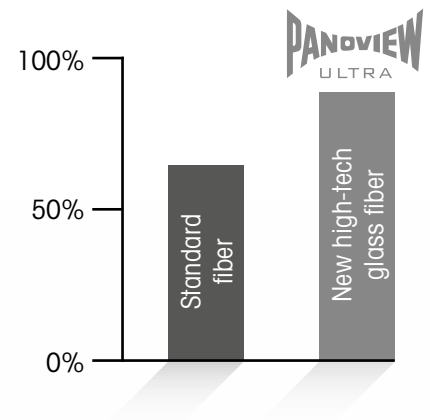
The effect is a drastically improved sharpness on the image's periphery, as well as an balanced sharpness gradient over the wide field of view and deep focal range.

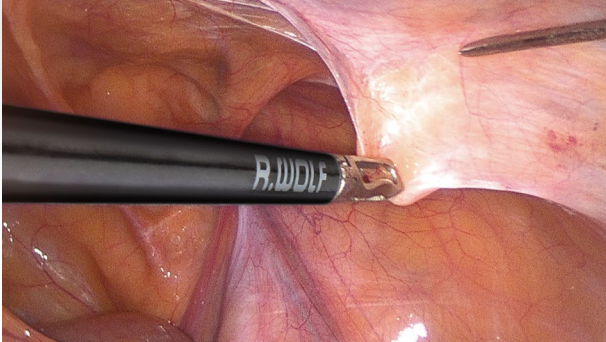
### Strikingly Bright

The demand for the ultra high resolution imaging in the operating room requires that telescopes transmit more light.

The **PANOVIEW ULTRA** telescope houses an increased number of advanced optical glass fibers, capable of superior light transmission compared to other fiber optic technologies. With the addition of more fibers, the endoscopic surgical site receives optimal illumination.

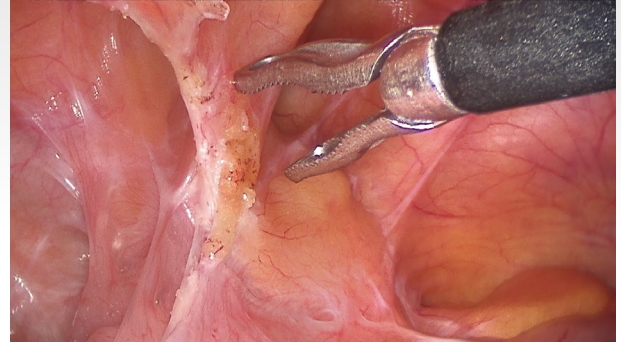
### Light transmission after 500 autoclave cycles





### Truly Natural

Telescopes can be responsible for chromatic aberrations, but **PANOVIEW ULTRA**'s glass fibers guarantee an advantageous white-light, natural impression and setting a new color rendering standard.



### Simple Handling

The **PANOVIEW ULTRA** telescopes can be used with the same light cable recommended for 10 mm diameter telescopes. Color coding on the connectors also make matching the correct light cable with the appropriate telescope an intuitive task.

**PANOVIEW ULTRA**'s durable light fibers, in addition to providing brilliant illumination, are also extremely durable. The telescope, after extensive reprocessing testing, has been shown to maintain a high light transmission standard compared to standard light fibers, ensuring the telescope's high performance over an extended lifetime.



## Telescopes

### PANOVIEW ULTRA Telescope, Ø 5.5 mm,

WL 300 mm

0° ..... **8935461**

30° ..... **8935462**

WL 430 mm

0° ..... **89354416**

30° ..... **89354426**

### PANOVIEW ULTRA Telescope, Ø 10 mm,

WL 305 mm

0° ..... **8934461**

30° ..... **8934462**

50° ..... **8934463**

WL 440 mm

0° ..... **89344416**

30° ..... **89344426**

50° ..... **89344436**



## Recommended light cables

### Fiber Light Cable complete,

Ø 5.0 mm, 2.3 m long

comprising:

Fiber Light Cable (80665023),

Adapter projector-side (8095.07)

and Adapter endoscope-side (809509) .... **806650231**

### Fusion Fiber Light Cable complete,

Ø 5.0 mm, 2.3 m long

comprising:

Fusion Fiber Light Cable (80655023),

Adapter projector-side (8095.07)

and Adapter endoscope-side (809509) .... **806550231**

## Accessories

### Reprocessing basket,

(L x W x H) 471 x 59 x 54 mm ..... **38021.111**

### Reprocessing basket,

(L x W x H) 610 x 59 x 54 mm ..... **38022.111**

